

Issue 3, 2011

Kirkman

HOUSE MUSEUM News

Kirkman House Joins the North American Reciprocal Museum Program

The Kirkman House Museum is now a participant in the North American Reciprocal Museum (NARM) program. NARM is an association of arts and cultural institutions in the United States, Canada, Mexico, Bermuda and El Salvador which offers select benefits of membership to each member institution's premier members. Premier membership is \$100 annually or above. NARM currently has 534 member institutions and these are increasing weekly.

Upon presentation of a Kirkman House membership card with the gold NARM sticker our members will receive:

- Free/member admission from all NARM museums.
- Member discounts on gift store purchases, concert and lecture tickets.



New KHM membership cards with the NARM stickers will be issued to our members at the \$100 Supporter level and above beginning in October. In addition, all members at lower levels will be offered the opportunity to upgrade their membership to receive these great NARM

benefits. Visit the NARM page on our web site to download a list of participating museums.

Participation in NARM has necessitated a few changes to the KHM admission policy and membership levels. The Student/Senior membership level has been dropped so the lowest membership is now the Individual \$25 level. All members currently at the Student/Senior level will continue to receive their benefits until their term expires. Museum admission has been changed from a voluntary donation to a

non-member admission fee of \$5 per person or \$20 per family. As a member, please bring your membership card for free admission to our museum. If you come as a couple your Individual level membership is valid for one free admission.

We believe that NARM participation greatly enhances the value of our premier memberships and gives everyone in our community even more reason to be one of our Sponsor members.



HALLOWEEN PUMPKIN PARTY

Sunday, October 30 • 1pm to 3 pm

- Crafts and games
- Prizes for costumes, carved pumpkins (bring your own) and painted pumpkins
- Hot cider, treats and more
- Free admission for everyone

Kirkman
HOUSE MUSEUM

214 North Colville Street • Walla Walla, WA
509-529-4373 • www.kirkmanhouse.org

2011 Board of Directors

Donna Gardner, *Board President*
 Sally Kearsley, *Past President*
 Wendy Cheng, *Vice-President*
 Rick Tuttle, *Treasurer*
 Pam Myers, *Secretary*
 Maejul Gannon
 Mona Geidl
 Carolyn Priest
 Kent Settle
 Josh Van Donge

Museum Staff

Carl Killelea, *Maintenance Technician*
 Kristen Wilson, *Program Coordinator*

Museum Volunteers

Howard Boggs
 Susan Monahan

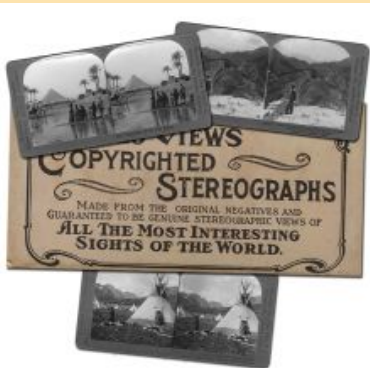
Special thanks to -

Best Western Walla Walla Suites Inn for partnering with us to provide educational tours to local schools.
Coffey Communications for supporting our 2011 programs.
Whitman College and *Walla Walla University Students*

The Vicarious Traveler Exhibit held over until November 20

Over 100 stereographs are on display and nearly twice that number available for personal viewing with our vintage viewers.

Don't miss the opportunity to see these incredible images. Once you start looking at them you won't want to stop until you've seen them all!



Whispered Memories:

Date changed to Saturday, November 12

Two sessions: 10am to 12pm and 1pm to 3pm

Psychometry – a term first coined in 1842 – is a form of extrasensory perception wherein a psychic connects to paranormal beings by making physical contact with an object formerly owned by deceased individuals. This practice was popularized in the Victorian era as they frequently lost family members prematurely.

In two sessions regional psychic Janice Lynch will use her psychometric medium as a means of connecting individuals with their ancestors. Tickets are \$25 per person and include a two hour session with a group of no more than 25 people, tea and snacks. Ms. Lynch will connect with whomever makes themselves available to her during the session and share with living guests this communication. Call the museum to reserve your seat. 529-4373

Historic Farm-to-Table Dinner:

Come join us on **November 13** for an evening from the past, with a classic 1800's menu in the beautiful historic Kirkman House Museum. **Chef Melissa Davis** will prepare this authentic meal which will be served on fine china. Professional Cellist Dr. Sally Singer will entertain us before the meal and we will also be presenting our 18 minute video on the life of William Kirkman.

Menu:

Pease Porridge
 Roast Filet of Beef and Roasted Mutton
 Braised Cardoons, Masht Potatoes, Baked Pumpkin and Parsnip
 Steamed Pudding and Apple Pandowdy
 Wine and non-alcoholic beverages

Tickets: \$50 per person

Limited number of seats available. Pre-sale tickets only. Call, stop in or mail payments directly to the Kirkman House.

This is a benefit dinner. Proceeds go directly to Kirkman House Museum.

Annual General Meeting

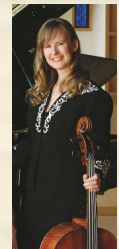
Members of the museum are invited to attend the December board meeting and Annual General Meeting to be held on Tuesday, December 20 at 5pm We will discuss the state of the museum and future plans. Seating is limited so please RSVP by December 12.

Ribbonwork Christmas Stocking Class:

Ribbon work or ribbon weaving is an old art. Ribbons of varying widths, colors and materials are woven together, secured to a base fabric and then sewn into a finished piece.



This class for adults will be **Saturday, November 19, 2011** from 1 to 4 p.m. at Kirkman House Museum. Cost will be \$50 for the class and materials or \$25 for the class session alone for those who choose to bring their own ribbons and fabric. For those desiring to bring their own materials, a list will be available on the museum web site. Each person should bring a padded board or firm pillow at least 12 inches square to use as a base for pinning the ribbon. Other equipment needed to complete the project will be available on site. Class is limited to 10. Enrollment deadline is November 16. - More on the web site



Sally Singer

Rent the Museum for your Christmas Party

The Kirkman House is open to Christmas parties, weddings, receptions and other special events. During the Christmas season every room in the house will be decorated and waiting for your intimate gathering of coworkers and friends. Call early to reserve your special date. We have packages for small intimate gatherings inside the museum, and for larger events on the grounds. The unique character of our 19th century Italianate home coupled with its location adjacent to our historic downtown & lodging makes the Kirkman House an ideal venue for those special moments shared with family, friends or coworkers.

Victorian Christmas Jubilee

The museum's annual holiday open house this year falls on Saturday, December 3 from 1:00 P.M. to 5:30 P.M. It's a great way to warm up with music, traditional holiday décor and lots of goodies before heading over to see the annual Macy's Parade of Lights at 6:00 P.M.

The Walla Walla Valley Band will stop by for a performance. Other musicians will be in and out throughout the afternoon.

Winter Closure

The Kirkman House will close for the winter right after the Victorian Christmas Jubilee but will be available for tours and rentals upon request. The museum will reopen regular tours on March 1, 2012. Visitations are typically very low this time of year so we are using this opportunity to do a thorough cleaning, organize our office, collection processing and storage spaces, and create more interpretive signs for our permanent collections. We'll also be working on a major exhibit, "The History of Baseball in Walla Walla" set to open in spring 2012. If you would like to help with any of these projects please contact the museum.

Rose Garden

It has taken a while but construction of the first phase of the Rose Garden near the Carriage House has been completed. A wood fence has been attached to the existing chain link fence to hide the neighbors garbage cans and to assist the climbing roses that will be planted. Pavers for a patio and path were laid and roses, shrubs and ground covers planted.



All roses are old varieties from the 19th and early 20th centuries. They represent all the major groups of heirloom roses. All are very fragrant and are continuous or repeat bloomers.

Climbers: Zephrine Drouhin, Aimee Vibert, Bougainville, and Reine des Violettes
Shrub: Alfred de Dalmas, Comte de Chambord, Dupuy Jamain, and Louis Philippe

Ground covers are "Snow in Summer" and Woolley Thyme.

This project is made possible by the College Place Garden Club and the labor of Rick & Patti Tuttle, Susan Swayne, Josh Van Donge, Howard Boggs, Carolyn Priest, Carl Killeen and Ted Koehler and family.



2011 Events

Halloween Pumpkin Party

October 30

Costume and pumpkin art contests, games and fun for the whole family

Ribbon Weaving Christmas Stocking Class

November 10

This class will use the technique to make a one-of-a-kind Christmas stocking.

Whispered Memories Psychic Tea

November 12 (rescheduled date)

Tickets on sale now, morning and afternoon sessions

Farm to Table Dinner

November 13, 5pm

Annual General Meeting

December 20, 5pm

Christmas Bazaar

December 1 and 2

12pm to 8pm

Victorian Christmas Jubilee

December 3

1pm to 5:30pm

Museum Closes for regular tours for the Winter

December 4

Heritage Events in the Valley

Fort Walla Walla Museum

Through October 31

Special Exhibit

Annual heritage quilt show featuring a sampling of more than 20 of the Museum's 100 heritage quilts.

Art Gallery Show

The Northwest Sisters in Art present a show of their mixed-media work in the Grand Hall of the Museum.

More News

There simply isn't enough room in this newsletter for all the news from the museum. Check out the *News* page of our web site for these other articles.

- Sheep to Shawl Recap
- College Community Service Report
- Vegetable Garden
- Garage Sales Recap
- Kitchen Window Restoration
- Meet our new board members

Historic Architecture Development, Inc.
DBA Kirkman House Museum
214 N. Colville
Walla Walla, WA 99362

Non-Profit
US Postage

PAID
COLLEGE PLACE WA 99324
PERMIT NO. 44



Find us on
Facebook

**We need donations of
artificial Christmas Trees**

The Kirkman House Museum is committed to preserving our past and providing a setting for understanding our local history. There are many ways you can help; your support is what makes great things happen at the Kirkman House!

Become a Museum Member

Members' benefits include a subscription to the museum's newsletter, discounts on program on class fees, and invitations to "Members Only" events. Your membership dues help pay for special exhibits and programs at the museum that enhance the cultural spirit of our community.

Join the Bricks and Mortar Society

These generous members commit to donating \$200 a year for three years to ensure the preservation work at the museum continues.

Include the Kirkman House Museum in your planned giving

From its origin as a museum 1978, the Kirkman House has preserved an important piece of Walla Walla's architectural and cultural heritage. Today, the museum continues to provide education about daily family life in Victorian-era Walla Walla. A gift to the Kirkman House Museum's endowment fund is an investment in the cultural heritage of our valley for future generations.

Support the annual fund

Contributions to the museum's annual fund provide important support for the care and maintenance of the museum, the conservation of our collections and our ability to continue providing dynamic programming.

Donate in-kind items or services

Contributions of material goods or professional services help reduce the operating costs of the museum.

Volunteer

Whether leading tours, assisting with collection management and exhibits, or helping at our special events our volunteers are invaluable to the museum's successful operations.

Kirkman House Mission

The Kirkman House Museum enriches the Walla Walla community with exhibits, events and programs that bring our valley's history to life.

Membership Benefits

- Kirkman House Museum Newsletter
- Advance notice for Kirkman House programs
- Invitation to "Members Only" events
- Recognition in the Kirkman House News
- Tax deduction on dues
- Membership in NARM (\$100 level and up)
- Knowledge that you are helping to save the Kirkman House for future generations

2011 KIRKMAN HOUSE MUSEUM MEMBERSHIP AND RENEWAL

Name: _____

Address: _____

City, State ZIP: _____

E-mail/Phone: _____

Please contact me about volunteer opportunities.

I would prefer not to have my name listed in museum publications.

ANNUAL MEMBERSHIP CATEGORIES

Upgrade to: _____ Individual (\$25) Family (\$50)

Supporter (\$100) Friend (\$250) Donor (\$500) Patron (\$1,000+)

Bricks & Mortar Society (\$200 commitment per year for three years)

In addition to my membership, I am enclosing a gift of \$ _____

Credit Card #: _____

Visa, MC, Exp. Date: _____ Total amount enclosed: \$ _____

Please return this form with your check payable to: **Kirkman House Museum**

Mail to: Kirkman House Museum 214 N. Colville Walla Walla, WA 99362