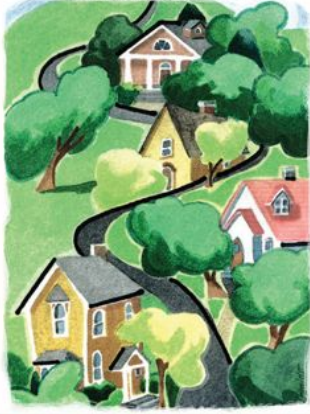


Issue 1, 2011

# Kirkman

HOUSE MUSEUM News

## Sweet Home Walla Walla Historic Home Tour April 17, 2011



### Tickets Now Available for Historic Homes Tour

Tickets are now available for the 3rd Annual Sweet Home Walla Walla tour, a rare opportunity to visit six of Walla Walla's historic homes on Sunday, April 17 from 11 a.m. to 4 p.m. This self-guided tour is presented by the Kirkman House Museum and features homes that showcase a variety of approaches to preservation, restoration and adaptive reuse.

Visitors will hear about the architectural styles and history of each home they tour, and learn

about the people who built and lived in the structures that continue to influence the town's character. Advance tickets are \$20 per person, \$15 for museum members, and can be reserved online at [kirkmanhousemuseum.org](http://kirkmanhousemuseum.org) or purchased at the Kirkman House Museum.

Space is limited, and tickets can sell out. In the event tickets are still available on April 17, they will be sold at the museum for \$25 per person.

The museum still needs a few volunteer docents to staff the homes for 2 ½ hour shifts. Docents receive a ticket to enjoy the tour outside of their scheduled shift. If you would like to volunteer, or for more information, contact Kirsten Schober at 509-529-4373. Sweet Home Walla Walla is made possible with a grant from Tourism Walla Walla.



## JOURNEY Stories



### Journey Stories through April 30

The Smithsonian Institution's Journey Stories exhibit is here for just 4 more weeks. Learn how and why Americans have kept traveling, exploring and pioneering ever since the long and treacherous journeys of the very first immigrants.

This multimedia exhibit weaves photographs, recordings, artifacts and firsthand accounts into a compelling narrative that spans our country's whole history. This is a family-friendly exhibit, suited to curious minds of all ages. Don't miss it.



Smithsonian  
Institution

Humanities  
WASHINGTON

### Field trip to Millwork, Inc. for woodworking workshop, May 21

Despite common misperceptions, historic wood windows can be energy efficient and retain their beauty for lifetimes. In a workshop at Millwork, Inc., master carpenters will demonstrate how to repair, rebuild and reproduce residential wood windows. The day-long event will also include lectures and demonstrations on door and sash joinery, line shaft blacksmithing, the manufacture and use of vintage woodworking machinery and research on wood window performance.

Millwork, Inc. is in Zillah, WA, so we'll be meeting at the museum to caravan. Tickets are \$55, and lunch is included. You can get more information and register by May 14 at the museum or at our Web site, [www.kirkmanhousemuseum.org](http://www.kirkmanhousemuseum.org).



## 2011 Board of Directors

Donna Gardner, *Board President*  
 Sally Kearsley, *Past President*  
 Wendy Cheng, *Vice-President*  
 Rick Tuttle, *Treasurer*  
 Pam Myers, *Secretary*  
 Sue Gillespie  
 Ted Koehler  
 Andrea Stout  
 Josh Van Donge

## Museum Staff

Kirsten R. Schober, *Executive Director*  
 Carl Killelea, *Maintenance Technician*  
 Kristen Wilson, *Program Coordinator*

## Museum Volunteers

Ruby Brand  
 Sylvia Covington  
 Susan Monahan  
 Lenel Parish  
 Joan Potts  
 Jen Rickard  
 Ted Sengpaseuth  
 Clare Spatola-Knoll  
 Bill Vollendorff  
 Kathie Weingart  
 Marilyn Wilson

## Special thanks to -

*Best Western Walla Walla Suites Inn* for partnering with us to provide educational tours to local schools.  
*Coffey Communications* for supporting our 2011 programs.

## Recent Grants

*MDU Resources*, parent company of Cascade Natural Gas, awarded the Kirkman House \$2,000 for its 2011 programs. *The Clara & Art Bald Trust* also gave \$4,000 to help fund the museum's activities this year.

## Family Heirlooms Return

James Reynolds, and his daughter Ann, recently donated several Kirkman family pieces to the museum, including Fanny Ann Kirkman Reynolds silver service. The set was purchased in the early 1900s from Falkenberg jewelers. The museum will have the service on display at the June 26 Strawberry Regale. Thank you to the Reynolds family for sharing their history with Walla Walla.

## Kirkman House Cookbook

Board secretary Pam Myers has taken the lead on producing a cookbook for the museum. The cookbook will include recipes from Kirkman House board members, museum patrons and Kirkman family descendants. Look for it soon at the museum.

## 2011 Officers

Donna Cook Gardner, President; Wendy Cheng, Vice-President; Rick Tuttle, Treasurer; Pam Myers continues as Secretary. Thank you to our officers and all board members for the time they dedicate to the museum.

## Farewell to Susan Roberts

Susan Roberts recently completed her 3rd consecutive term on the Kirkman House Museum Board of Directors. A longtime supporter of arts and heritage in our valley, Susan helped the museum implement the Sweet Home Walla Walla historic home tour and provided goodies for various events. We would say we will miss her, but we know that she will continue to be one of the museum's leading advocates.

## Kirkman House Welcomes New Board Member - Ted Koehler

Ted is a fourth generation Walla Wallan, has lived here for 40 years and is currently the Housing Services Director for Blue Mountain Action Council (BMAC). He serves on the City of Walla Walla Ad Hoc Sustainability Committee, and recently was appointed to the city's Planning Commission.

A trained lead-based paint risk assessor and inspector, Koehler also is an advanced energy auditor and educator and serves on the Lead and Environmental Hazards Association. He graduated from the local Citizen Early Response Team (CERT), Walla Walla Citizens' Academy, and the Crime-Free Rental Housing programs.



## Program Coordinator

The museum recently welcomed Kristen Wilson to our staff. After earning her BA in Anthropology at University of Oregon and an MA in Folk Studies at Western Kentucky University, Kristen Wilson completed a three month internship at the Melbourne Museum in Australia, and fieldwork in Chapala, Mexico. As the current Program Coordinator, she organizes school tours and develops engaging interactive learning opportunities for students. She will be with us through August managing the Hands on History summer camp series.

## 2nd Sunday Spin-Ins Return

The first of the Kirkman House Textile Center's 2011 Second Sunday spin-ins was held on March 13. From 1 pm to 4 pm, participants from Tri-Cities and beyond joined Walla Walla Valley Textile Artists to spin, weave and knit.

At the upcoming April 9th spin-in Textile Center coordinator Susan Swayne will demonstrate paper yarn spinning. While it may sound impractical, paper yarns have been spun in Japan for centuries. The clothing and household items woven from them could be dyed and washed. The strongest yarns came from recycled paper made with long fibers like mulberry bark, recycled linen or abaca. Paper fabric was woven for both peasant clothing and accessories for the nobility.

The yarns may be plied or used as singles depending on whether the item is to be knitted or woven. Paper yarn may be plied with a strand of another fiber such as silk, wool or cotton. Paper yarns could be used in table runners, place mats or baskets.

Second Sunday spin-ins continue through November, excluding the months of May and September. Visit the website for the most up-to-date information.

## Pioneer Park Bandstand Concert Series



The Kirkman House Museum is excited to again partner with the City of Walla Walla to host a series of summer concerts at the Pioneer Park Bandstand. These concerts continue the more than 100-year old tradition of bringing our community together around the bandstand for evening entertainment.

So far we have two performances scheduled in July. Saturday, July 16 at 6:00 p.m. The Table of Contents play

Inland Northwest pop rock. Saturday, July 30 at 6:00 p.m. enjoy R & B from the Ken Hanson Band of Portland, OR. We'll let you know as more concerts are scheduled. All concerts are free, and will be canceled or rescheduled in the event of bad weather.

This year we've also enlisted **West of the Blues BBQ** to be on site for the events, so dinner will be available for purchase as well as the famous Kirkman House Ice Cream Grabbers. The Walla Walla Cruisers Car Club has been invited to make these events a regular stop on their Cruise-In schedule, and the Save the Aviary program will have representatives on site.

Come enjoy good food and music at this beautiful historical site, and help this event continue to grow.



## A Day of Lace Making

Local lace makers, committed to preserving their tradition, will host a day of lace-making at the Kirkman House on Saturday, April 23 from 10 am to 4 pm. Drop in and watch textile artists create lace using a variety of traditional methods.

Bobbin Lace is made with bobbins and a pillow. The bobbins, turned from wood, bone or plastic, hold threads which are woven together and held in place with pins stuck in the pattern on the pillow.

Tatting produces an especially durable lace constructed of a series of knots and loops. Tatting dates to the early 19th century, and can be used to make lace edging as well as doilies, collars and other decorative pieces. The term for tatting in most European languages is derived from the French word *frivolité*, which refers to the purely decorative nature of the textiles produced by this technique.

Knitted lace includes Shetland lace, an elaborate lace that is often made for wedding shawls.

Crocheted lace includes Irish crochet, a type of lace that originated in 19th century Ireland. Women were taught the method by charity groups so they would have a source of income during the potato famines that devastated Ireland.

Lace pieces that belonged to Isabella Kirkman and her daughter, Fanny Ann Reynolds, will be on display along with other pieces, both historic and contemporary.

## 2011 Events

### Journey Stories

January 29 - April 30  
an exhibit that explores the mobile nature of Americans ~ why we move, how we move and what that says about us.

### Second Sunday Spin-Ins

March - November

### Sweet Home Walla Walla

April 17

A tour of 6 Historic homes

### Museum will be closed

May 1 - May 6

### First Friday ArtWalk

May - December

### Hands on History

June - August

Day & weeklong camps for kids ages 6-12

### Pioneer Park Bandstand Concert Series

June - August

### Strawberry Regale & Fashion Show

June 26

An afternoon of delectable desserts and vintage fashions

### Sheep to Shawl Fall Festival

September 10

The museum's fall festival with sheep shearing, spinning & weaving and lamb BBQ

### Whispered Memories Psychic Tea

October 29

### Halloween Party

October 30

Our family-friendly Halloween event

## Heritage Events in the Valley

### Fort Walla Walla Museum

Enjoy their first special exhibit of the season in the Entry Hall, **Honoring the Red, White and Blue: Patriotic Beadwork of the Plateau People** (from the Fred L. Mitchell Collection) through August 14 and **Norman Adams: A Retrospective**, an art exhibit featuring the works of a Walla Walla native son through June 12.

### April 17 Open House

sponsored by Best Western Walla Walla Suites Inn and College Place Heating & Air Conditioning, Inc.

An admission-free day dedicated to the wonderful community supporting the Museum!

Historic Architecture Development, Inc.  
DBA Kirkman House Museum  
214 N. Colville  
Walla Walla, WA 99362

Non-Profit  
US Postage

**PAID**  
COLLEGE PLACE WA 99324  
PERMIT NO. 44



Find us on  
**Facebook**

### Get on the Kirkman House e-news list!

Subscribe to our monthly newsletter, and keep updated with museum activities.

Go to [www.kirkmanhousemuseum.org](http://www.kirkmanhousemuseum.org) and enter your email in the "Join our E-mailing List" box in the upper right-hand corner.

The Kirkman House Museum is committed to preserving our past and providing a setting for understanding our local history. There are many ways you can help; your support is what makes great things happen at the Kirkman House!

#### Become a Museum Member

Members' benefits include a subscription to the museum's newsletter, discounts on program on class fees, and invitations to "Members Only" events. Your membership dues help pay for special exhibits and programs at the museum that enhance the cultural spirit of our community.

#### Join the Bricks and Mortar Society

These generous members commit to donating \$200 a year for three years to ensure the preservation work at the museum continues.

#### Include the Kirkman House Museum in your planned giving

From its origin as a museum 1978, the Kirkman House has preserved an important piece of Walla Walla's architectural and cultural heritage. Today, the museum continues to provide education about daily family life in Victorian-era Walla Walla. A gift to the Kirkman House Museum's endowment fund is an investment in the cultural heritage of our valley for future generations.

#### Support the annual fund

Contributions to the museum's annual fund provide important support for the care and maintenance of the museum, the conservation of our collections and our ability to continue providing dynamic programming.

#### Donate in-kind items or services

Contributions of material goods or professional services help reduce the operating costs of the museum.

#### Volunteer

Whether leading tours, assisting with collection management and exhibits, or helping at our special events our volunteers are invaluable to the museum's successful operations.

### Kirkman House Mission

The Kirkman House Museum enriches the Walla Walla community with exhibits, events and programs that bring our valley's history to life.

### Membership Benefits

- Kirkman House Museum Newsletter
- Advance notice for Kirkman House programs
- Invitation to "Members Only" events
- Recognition in the Kirkman House News
- Tax deduction on dues
- Knowledge that you are helping to save the Kirkman House for future generations

### 2010 KIRKMAN HOUSE MUSEUM MEMBERSHIP RENEWAL

Name: \_\_\_\_\_

Address: \_\_\_\_\_

City, State ZIP: \_\_\_\_\_

E-mail: \_\_\_\_\_

Please contact me about volunteer opportunities.

I would prefer not to have my name listed in museum publications.

#### ANNUAL MEMBERSHIP CATEGORIES

Students/ Seniors (\$15)     Individual (\$25)     Family (\$50)

Supporter (\$100)     Friend (\$250)     Donor (\$500)     Patron (\$1,000+)

Bricks & Mortar Society (\$200 commitment per year for three years)

In addition to my membership, I am enclosing a gift of \$\_\_\_\_\_

Credit Card #: \_\_\_\_\_

Visa,  MC, Exp. Date: \_\_\_\_\_ Total amount enclosed: \$\_\_\_\_\_

Please return this form with your check payable to: **Kirkman House Museum**

Mail to: Kirkman House Museum 214 N. Colville Walla Walla, WA 99362